

**Legend**

Artificial surfaces  
 EXCAVATION  
 Land use  
 DRIVE IN THEATER  
 GOLF COURSE  
 RIFLE RANGE  
 River  
 DRY WATER COURSE EXTENT  
 Northern Cape Province  
 Sinclair's Dam  
 Pixley ka Seme District Municipality  
 Emthanjeni Local Municipality  
 Wards no - 6  
 Britstown Administrative region  
 Farm portions  
 Servitude areas  
 Servitude lines

The entire mining area will be rehabilitated as follows: "To cover cleared areas with sufficient soil in order to maintain vegetation." Removal of Saleable Assets  
 All movable and saleable mine infrastructure and equipment will be removed from site.

Surface Drainage Restoration  
 Earthworks will be implemented to prevent water pooling and ensure proper surface runoff.

Topsoil Replacement and Vegetation  
 Cleared areas will be covered with sufficient topsoil to support the re-establishment of vegetation.

Infrastructure Decommissioning  
 All infrastructure not required post-closure will be removed.

Land Use Rehabilitation  
 Land will be rehabilitated for agricultural or grazing use, based on agreements with surrounding land users.

Erosion Control  
 Areas affected by soil erosion will be rehabilitated to prevent further degradation and sedimentation of nearby streams.

Soil Fertility Restoration  
 Soil fertility will be restored to match pre-mining conditions.

Contaminated Soil Treatment/Disposal  
 Contaminated soil will be removed, treated, or disposed of according to rehabilitation standards.

Noise Source Removal  
 All noise-generating equipment will be removed.

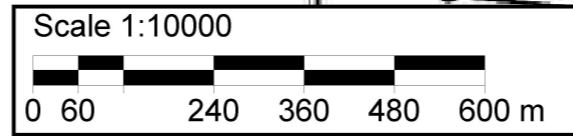
**Proposed application area coordinates:**  
 A30° 42' 26.72"S23° 59' 14.32"E  
 B30° 42' 28.06"S24° 00' 08.01"E  
 C30° 42' 40.34"S24° 00' 27.88"E  
 D30° 42' 54.32"S24° 00' 26.74"E  
 E30° 42' 46.65"S24° 59' 09.18"E  
 F30° 42' 41.58"S24° 59' 10.18"E  
 G30° 42' 41.67"S24° 59' 10.75"E  
 H30° 42' 41.75"S24° 59' 11.33"E

**Section 102 application area:**  
 133,1830 ha

**Client:**  
 De Aar Stone Crushers Empower (Pty) Ltd  
 2013/217985/07

**Consultant:**

Please take note that the coordinates were derived from a GIS and not physically surveyed and is therefore an estimation only.



**T 3023DB & 3024CA**